

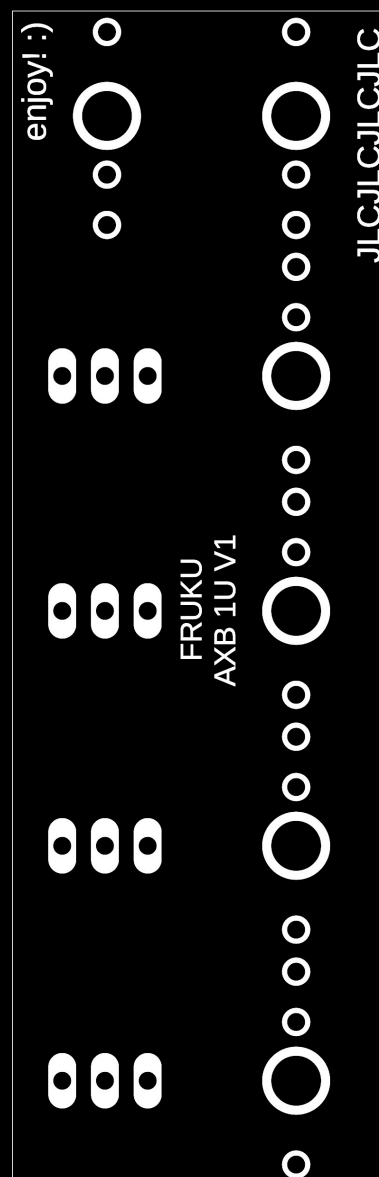
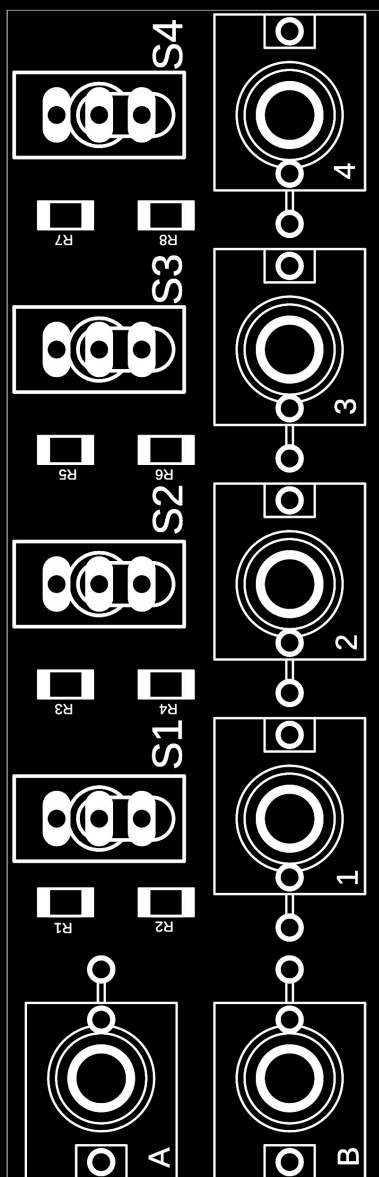
/// AXB 1U Build Guide

Thank you for choosing one of my products! Please read and follow this build guide carefully, even if you are an experienced DIYer. The Assembly order has been designed to make the build process as straightforward as possible.

Disclaimer:

Assembly is done entirely at your own risk. Fruku cannot be held responsible for any damage, injury, or malfunction that may occur during the build process.

PCB for reference:

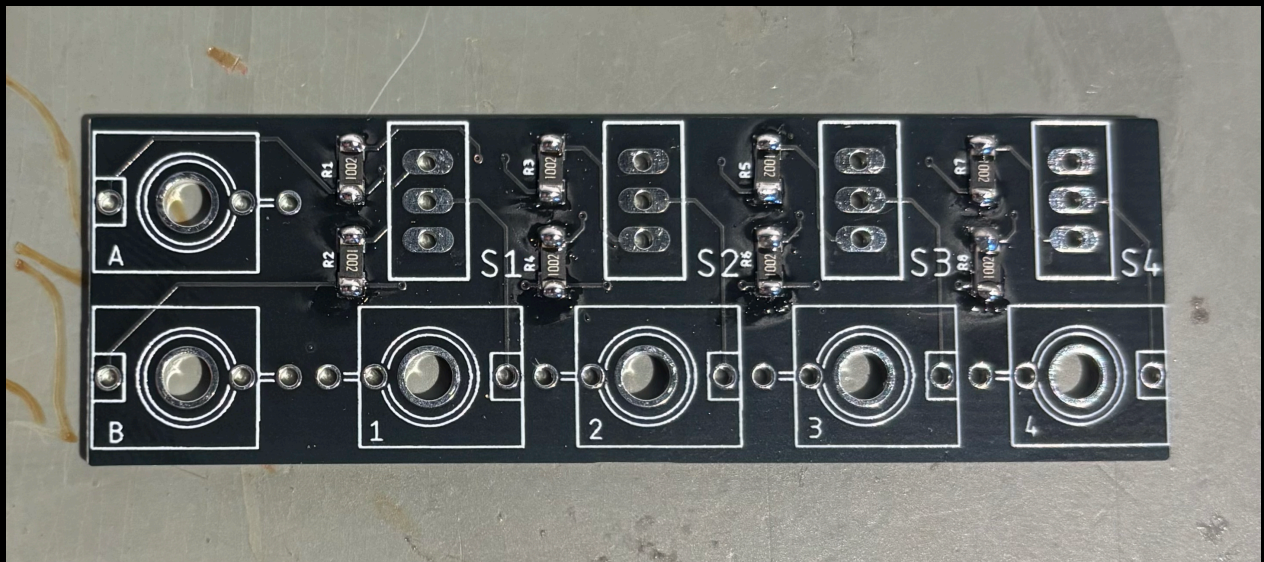


/// Resistors

Start by soldering the resistors. Refer to the **BOM file** to match the resistor values with the part numbers labeled on the PCB.

The easiest way to solder SMD resistors is by first adding a small amount of solder to one pad of the resistor footprint on the PCB. After doing so you can bring the resistor in place (with a pair of tweezers) and lightly press down on the resistor and touch the junction between the resistor and pad with a clean iron tip. You should feel the resistor slide into place. Ideally it would lay completely flat, but this isn't an absolute requirement. Now you can solder the second junction between the resistor and PCB.

After soldering the resistors your board should look like this:



/// Jack Sockets & Switches

Insert the jack sockets and switches (leave one nut mounted on each switch), **Do not** solder yet! First place the front panel over the jack sockets and switches, use one or two nuts from the jack sockets or switches to hold the front panel in place.

Now solder the jack sockets and switches.

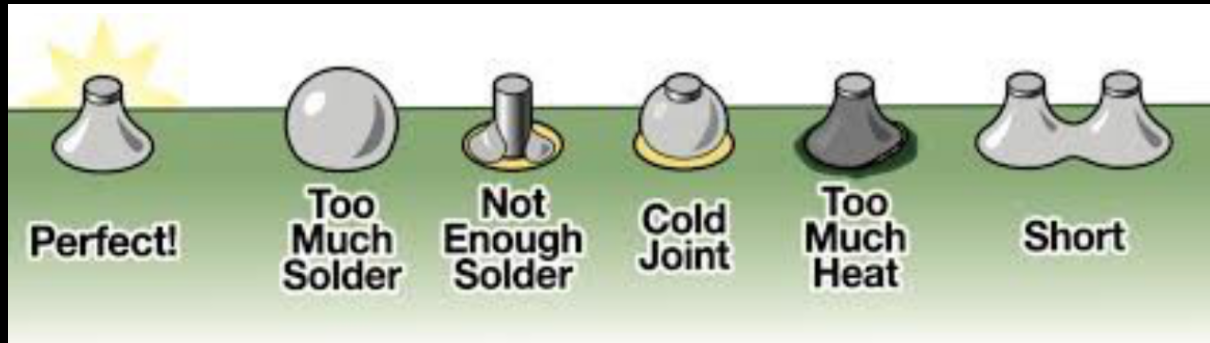
After soldering all the pins you can tighten the front panel on using the nuts from the jack sockets and switches.

/// Testing

As a last check, look over the PCB and check the soldering.

/// Troubleshooting

If the module does not work, check your **soldering**. It should be perfect, like in this picture:



fruku.club
info@fruku.club

FRUKU